



Data Management,
Automatic Version Control
and Backup for
■ Automated Produktion

Data Management for Automated Production

Applications

Version Control
Project History
Process Optimisation
Coordination with Partners
Team Communication
Life Cycle Management
Diagnostics & Troubleshooting
On-Site Mobility
Warranty
Remote Control
Audit Trail

Systems

SIMATIC S5, S7
WinCC
WinCC flexible
InTouch
CoDeSys
TwinCAT
RsLogix5000
ABB- and Kuka Robots
ProTool
Binary
ASCII
... and many more

Benefits

■ Scenarios

You have both networked and stand-alone controllers and devices. Your manufacturing operation runs on a multi-shift schedule. You want to maintain a **smooth production flow**, always keeping processes at an optimum level.

In-house staff – as well those from suppliers – constantly make **modifications** or perform tasks like bug fixing, optimisation, commissioning or rebuilding software.

All this is done on different programming devices and is accomplished and documented **manually**.

Lack of transparency, mistakes, uncertainty, and sometimes also real chaos can result.

To find the right status costs time and money; in the end even the quality and quantity of the product might suffer.

Or your enterprise would like to introduce the **same technical standards** in all plants and control these online.

You would like to develop these standards further, give them to your machine and software supplier, as well as to know that these are **automatically stored**.

■ Solutions

versiondog for Automated Production is our solution designed specifically for production plants.

Version Management enables a complete documentation and change history. An **Automatic Backup** and the **automatic comparison** between backup and the last server version (**Smart Compare**) recognise different versions and provide complete information helping you to keep track of everything that is important to you.

- Was an **outdated** version used?
- Have there been any changes to the database by **suppliers** without documentation or without leaving a note with the software?
- Is there an **error** or a mistake... or
- Is the deviation justified – and why?

With versiondog you always know, **who changed what, when and why** – and which version is currently used by which facility.

The **Automatic Backup** saves time – it is no longer necessary to send an expert down to the shopfloor to save and check versions manually.



Data Management with **versiondog**

Features

Powerful in Detail

- The universal **Automatic Backup** allows the backup of programs and setpoints (enhanced setpoint management for SIMATIC S7).
- **Arbitrary versions** can be **compared** quickly with each other (**Smart Compare**, see picture).
- A continual **overview** of the state of the plant (see picture).
- The **Zero Installation Client** enables program execution without previous installation.
- **S7 Library Management with cross referencing*** enables the definition of templates and instantly finds a faulty block version in all projects.

With the *versiondog* Life Cycle Management:

- Analyse and **restore** optimised legacy versions at any time.
- **Bottlenecks** can be detected and corrected.
- Documentations for **Audit Trails** can be created.

The optional integration for the **Windows Explorer** offers a number of clear advantages:

- Supports inexperienced users.
- No training costs.
- No need to introduce new rules or operating procedures.

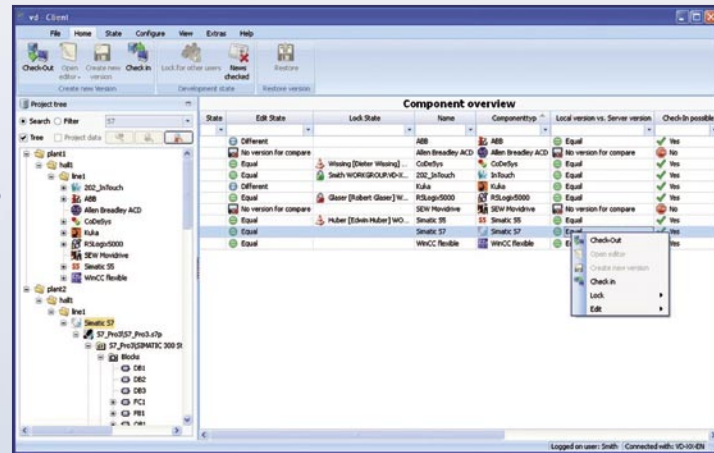
Optimisation

In many everyday working situations and routines, *versiondog* enables noticeable optimisation:

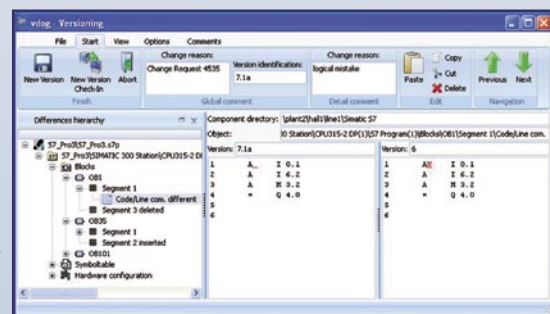
- **No more notes** when editing: **Smart Compare** automatically finds the changes.
- **Less input expenditure** by menu-controlled documentation: Simply specify the change reason; the system completes the rest independently.
- The automatic documentation tool supports compliance with standards such as ISO 900x, FDA 21 CFR 11, GxP, VDA 6.4 and many more.

Coordination between departments and external partners is also optimised by *versiondog*:

- Planning and maintenance departments
- Third party companies when projects are outsourced



Clear status at the daily start of work: Who is working on what?



Smart Compare: See differences at a glance!

Cross Plant Perspective

Synchronisation between *versiondog* servers at different locations allows the distribution and supervision of operational standards.

* available 2009



Conclusion

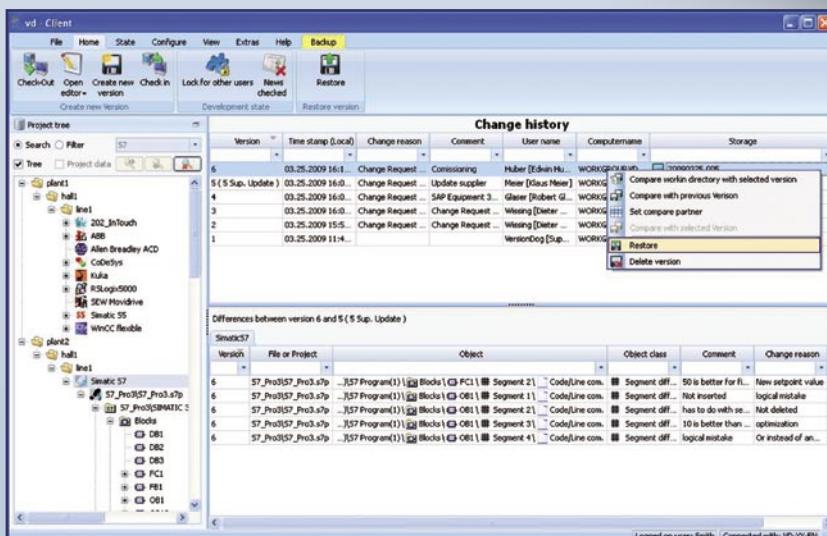
"Data management made easy!"

Higher Quality

- Optimisation of all procedures.
- Comprehensible relations between software version and product
- Staff coordination by user/access management
- Real-time change recognition
- Disaster recovery

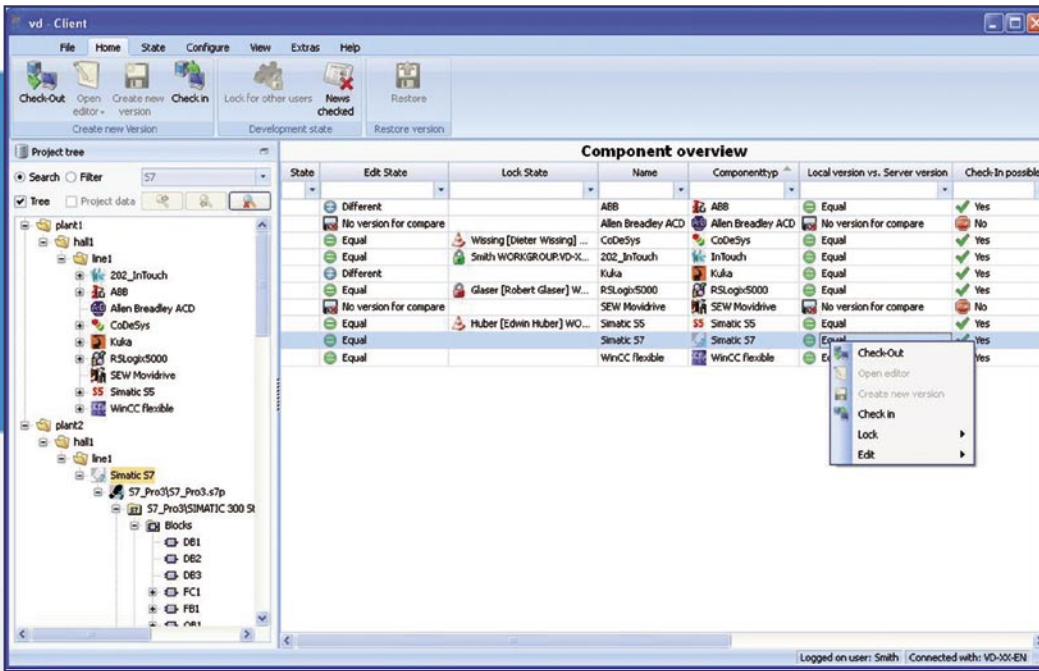
Reduced Cost

- Minimises / avoids shutdown periods
- Prevents scrap and production downtime
- Saves time by automation of manual procedures.

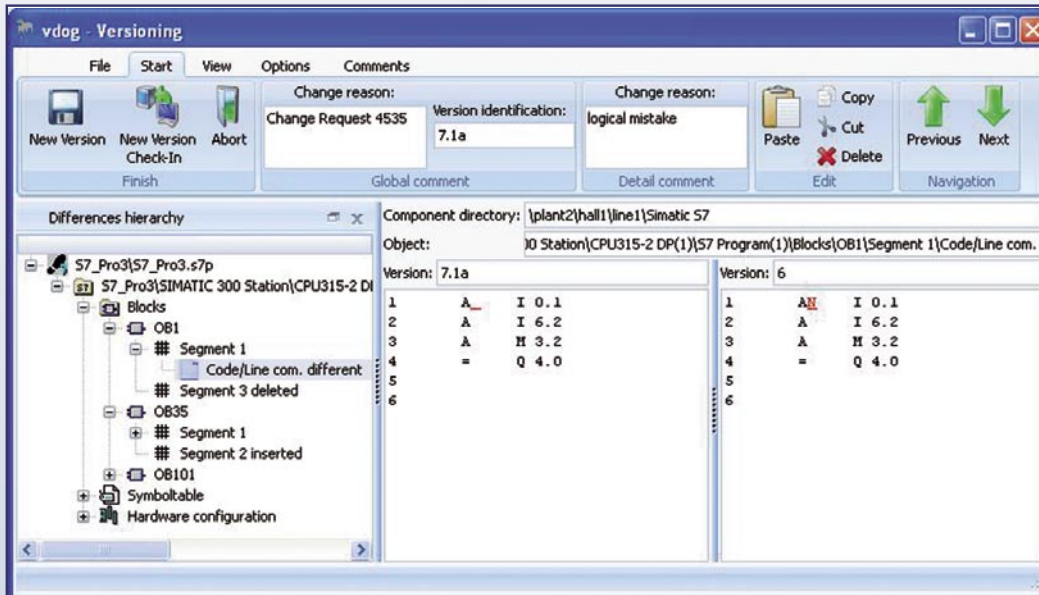


Seamless change history: Everything can be easily traced back.

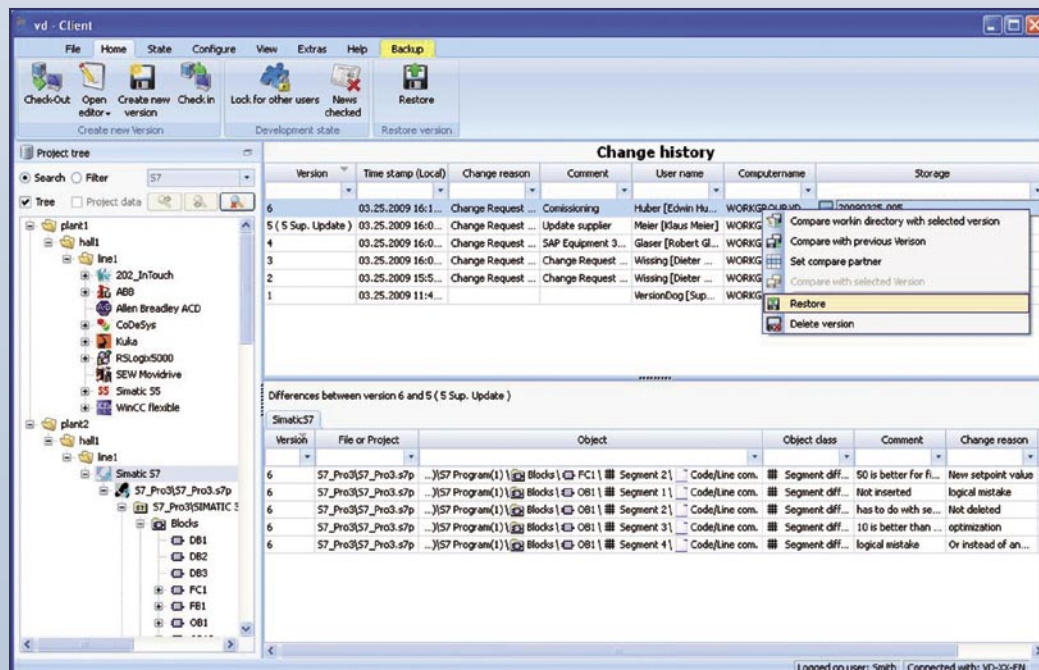
Screenshots at a Glance



Clear status at the daily start of work: Who ist working on what?



Smart Compare: See differences at a glance!



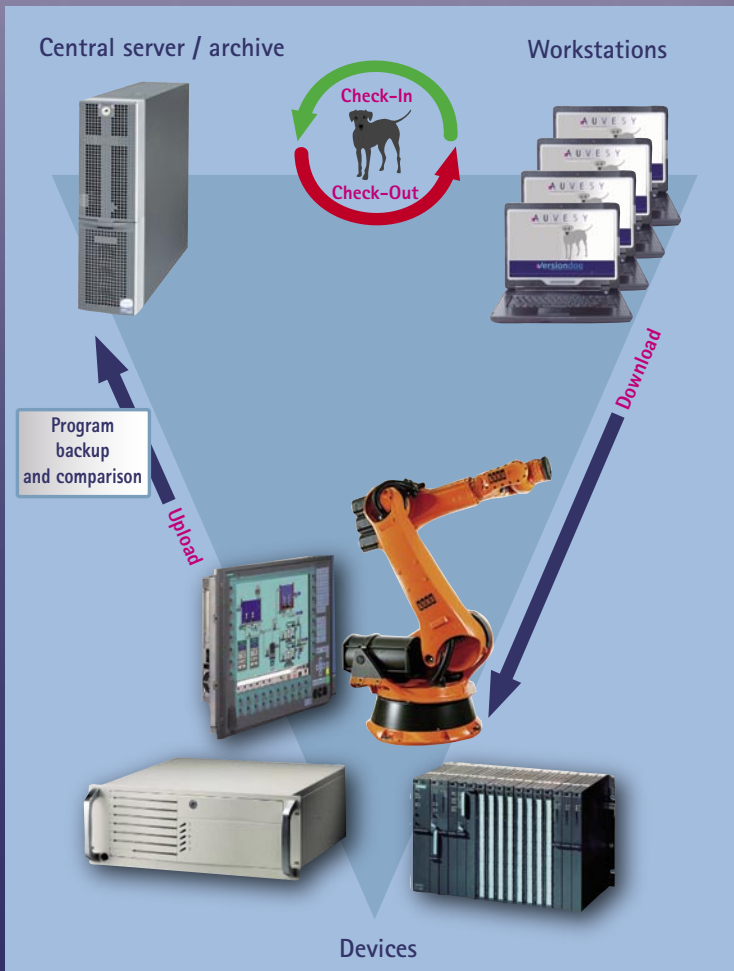
Seamless change history: Everything can be easily traced back..

Security in any Situation

System

■ **Controlled security by the *Closed Loop of versiondog.***

The *versiondog* server manages the central data filing of all software versions, thus accomplishing automatic safety backups by the network. Deviations between device and released version stored on server are recognised immediately. Check-out and check-in procedures mean that client versions can be easily updated and retransferred.



A U V E S Y

We are here for you!

Contact

Distributor pro Českou republiku a Slovensko

Pantek (CS) s.r.o.

Sušilova 1528/1, Hradec Králové, CZ-500 02

Tel.: +420 495 219 072 nebo 073

www.pantek.cz

www.versiondog.cz



A U V E S Y

GmbH & Co KG

Lazarettstraße 1

D-76829 Landau / Germany

Telefon: +49 (0) 63 41 / 944 600

Telefax: +49 (0) 63 41 / 944 611

E-Mail: info@auvesy.com

Internet: www.versiondog.com

Edition 05/2009 · Subject to alteration